



Product Specifications

Model: TFAT-11A Telescopic Fall Arrest Tower

The Pelsue #TFAT-11A Telescopic Fall Arrest Tower is constructed of structural aluminum and incorporates several steel components. The #TFAT-11A Telescopic Fall Arrest Tower can be secured in a variety of bases for varying applications. The #TFAT-11A can then be extended to provide an anchorage for a singular personal fall arrest system at a height of approximately 11' from the working surface. All specifications, instructions, and procedures provided within the product manual or upon Pelsue Specification Documents are based upon and only valid for usage with approved Pelsue ancillary components. The T.A. Pelsue Company can not verify equipment safety and/or compliance when utilized with anything other than Pelsue approved #TFAT-11A Series accessories.

General Specifications:

Product is designed and tested to be used:

- As a portable Elevated Fall Arrest Anchorage Point
Man Rated Load Capacity.....Single user with a maximum weight of **310 lbs.** inclusive of all tools & equipment with Safe Working Radius of **70 inches about the Tower Base**

Warning! A 900 LB. maximum arrest force (MAF) fall arrest device must be used when the system is employed as part of a complete fall arrest system. Maximum weight of person upon anchorage is 310 LBS. (140 KG.) inclusive of all tools and equipment

Materials & Construction:

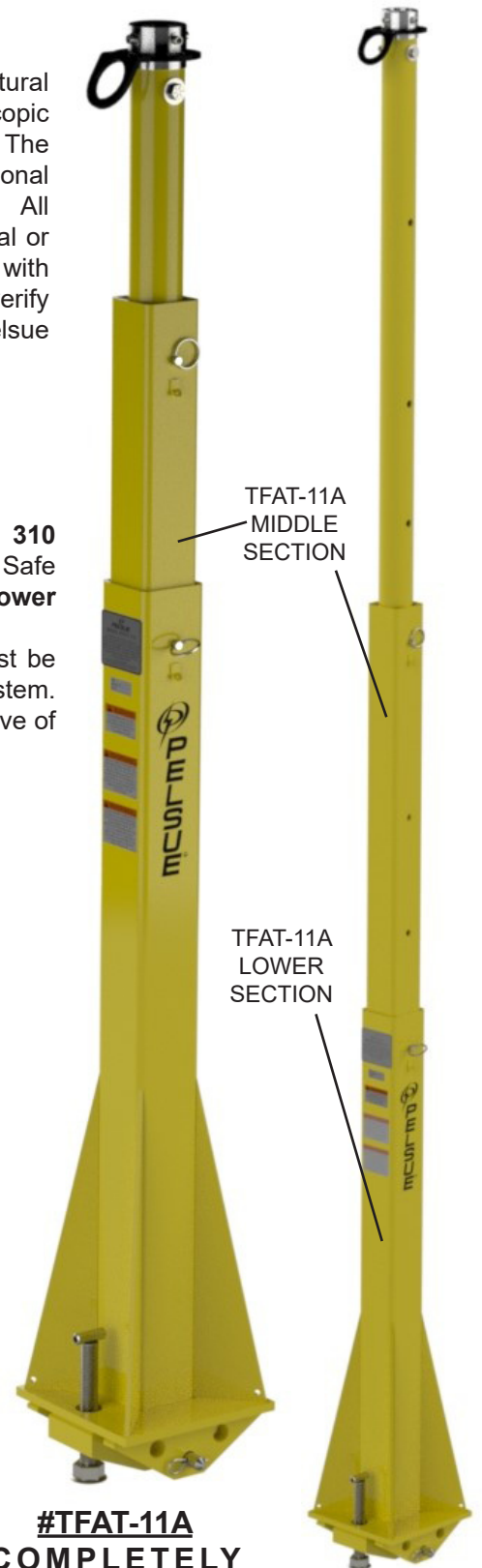
- General ConstructionWelded Aluminum

Weight:

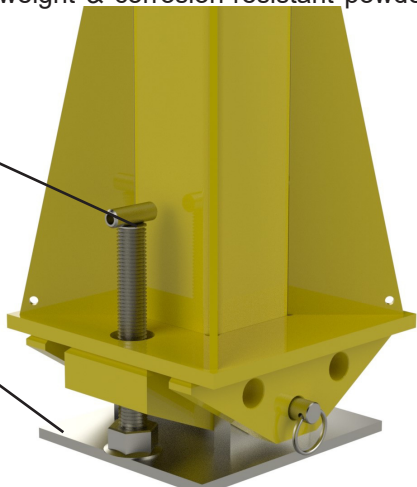
Weight75 lbs.

Other Features:

- Easily installs adjacent to elevated work stations requiring access
- Provides an elevated fall arrest anchor point
- Constructed primarily of lightweight & corrosion-resistant powder coated aluminum



SCREW PEG ASSEMBLY
 FB-SW1 (NOT INCLUDED)



#TFAT-11A Base shown with Model #FB-SW1 Base Plate

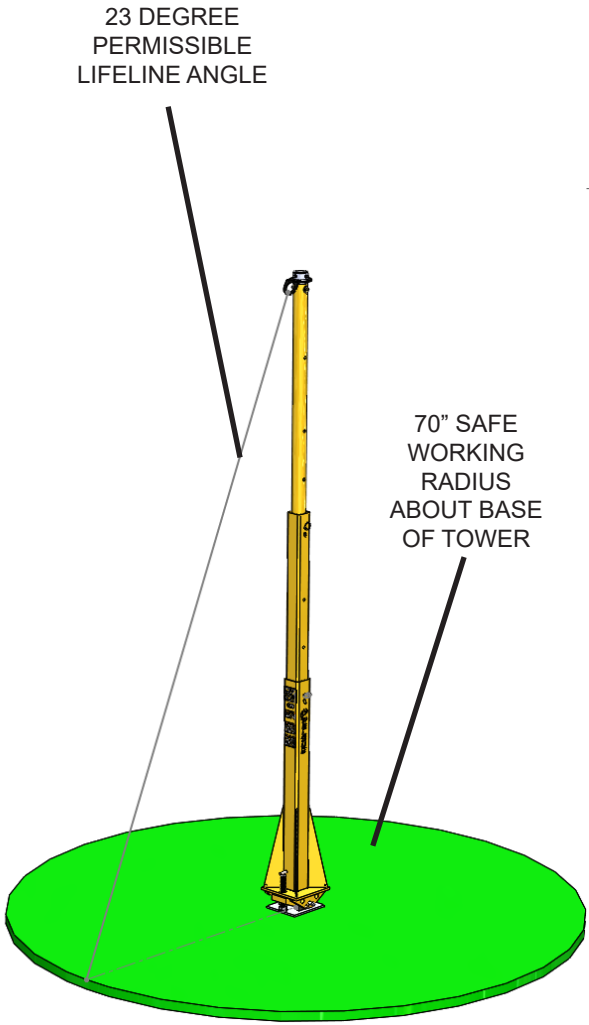
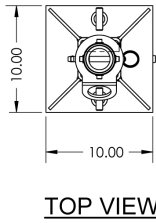
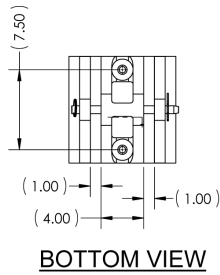
#TFAT-11A COMPLETELY RETRACTED

#TFAT-11A COMPLETELY EXTENDED

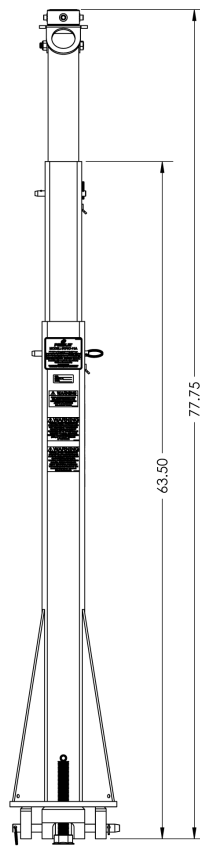
PELSUE
 T.A. Pelsue Company
 2500 S. Tejon St.
 Englewood, CO 80110
 Ph: 1-800-525-8460, (303) 936-7432
 Fax: (303)934-5581
 Web: www.pelsue.com E-mail: sales@pelsue.com



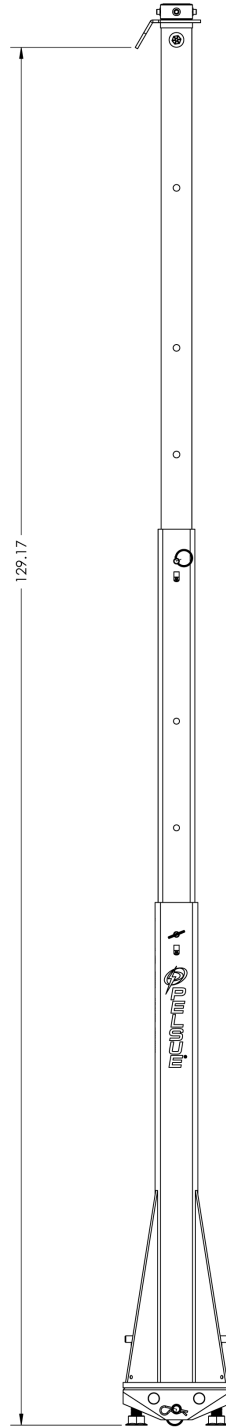
Product Specifications



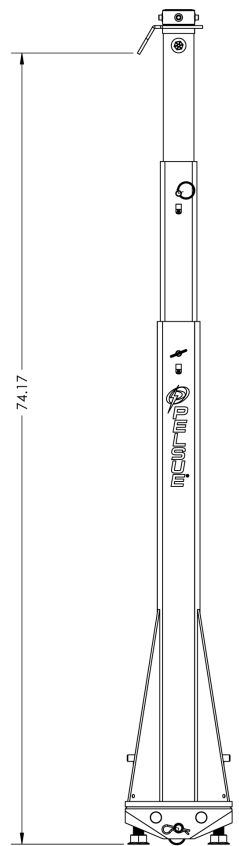
**#TFAT-11A
LIFELINE ANGLE
SCHEMATIC AT FULL
EXTENSION**



**FRONT VIEW
(MINIMUM HEIGHT)**



**SIDE VIEW
(MAXIMUM HEIGHT)**



**SIDE VIEW
(MINIMUM HEIGHT)**



2500 S. Tejon St.
Englewood, CO 80110
Ph: 1-800-525-8460, (303) 936-7432
Fax: (303)934-5581
Web: www.pelsue.com E-mail: sales@pelsue.com